

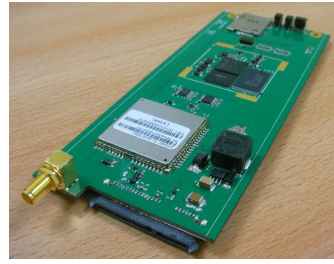


George Tang Industrial Corp.

GET-400/401M

DVR Notification and Tracking Device

Quick Installation Guide



Version 0.1

George Tang Industrial Corp.

Tel : +886-37-266922

Sales contact: voyager@gtico.com.tw

Address: 12F-2, No. 1 Chan Chian, Miaoli, Taiwan

<http://www.gtico.com.tw>

Fax: +886-37-266768

Technical support: voyager1@ms13.hinet.net



V0.3

The specifications in this document are subject to change without prior notice. George Tang Industrial Corp. assumes no warranties (either expressed or implied) regarding the accuracy and completeness of this document and shall in no event be liable for any loss of profit or any other commercial damage, including but not limited to special, incidental, consequential, or other damages. George Tang products are not intended for use in medical, life-support devices, commercial aircraft or any applications involving potential risk of personal injury, death, or severe property damage in case of failure of the product.

No part of this document may be reproduced or transmitted in any form by any means without the express written permission of George Tang Industrial Corp.



V0.3

Revision History

Ver.	Date	Description
0.1	Jun. 12 th , 2010	Initial draft



Contents

1. OVERVIEW.....	1
1.1. INTRODUCTION.....	1
1.2. ELEMENTS FOR SETUP.....	1
2. INSTALLATION.....	3
2.1 SIM CARD.....	3
2.2 TRACKER.....	3
2.3 PC.....	3
2.3.1 INSTALL THE CONFIGURATION TOOL.....	3
2.3.2 SETTING THE CONFIGURATION TOOL.....	4
2.3.3 CONNECT TO TRACKING SERVER.....	6



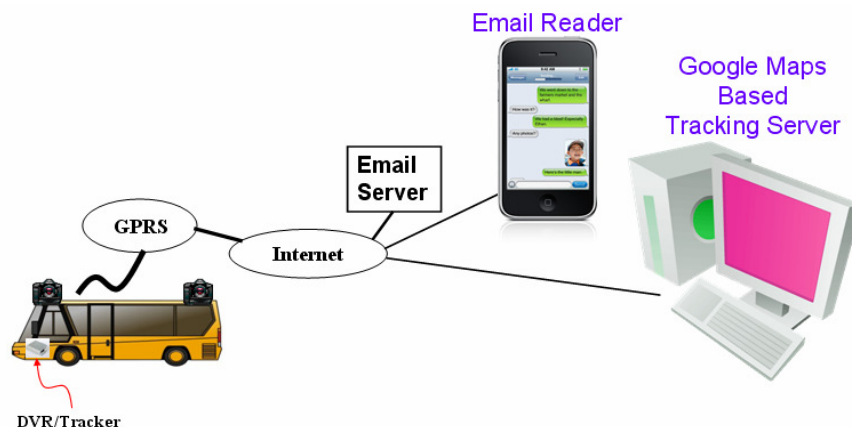
1. Overview

1.1. Introduction

The GET-400 and GET-401M notification and tracking device was specially designed to co-work and integrate with GeorgeTang's mobile DVR system to report the DVR notification status and to provide the valuable live tracking features. The GET-400 is a standalone device, and GET-401M is a slide-in module of DVR rack.

To act as DVR notification devices, GET-400/401M could send DVR related alerts to the predefined managers by e-mail through the GPRS Internet, and issue the emergency call through GSM network if necessary.

Moreover, the mobile DVR system along with integrated GET-400/401M tracker could be easily managed and monitored by the web based tracking server through the GPRS Internet. The users to manage fleets and vehicles could use PC/Windows/IE to login to the tracking server through Internet anywhere, anytime to lively track the vehicles on the Google Map and monitor the events and notifications from DVR system.



1.2. Elements for Setup

Please have following elements for setup first.

- ◆ SIM cards
 - Please contact your cellular operator to have SIM cards first.
 - Please ask the APN (Access Point Name) of the SIM card from the cellular operator. It is required for connecting to GPRS network.



- ◆ Tracker
- ◆ Tracker accessory
 - Panic button
 - Speaker
 - Microphone
 - GPS receiver
 - GSM/GPRS antenna
- ◆ DVR
- ◆ PC



2. Installation

2.1 SIM Card

Disable the PIN code checking before installing it into tracker's SIM card holder.

2.2 Tracker

2.2.1 Connect all accessories



- Panic button
- Speaker
- Microphone
- GPS receiver
- GSM/GPRS antenna
- Power cable

2.2.2 Connect it to DVR if a DVR system is used.

2.3 PC

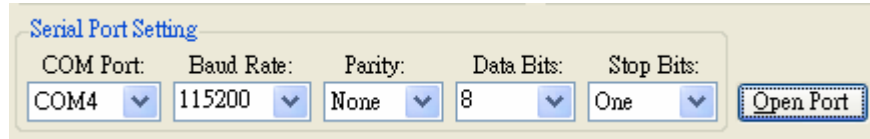
2.3.1 Install the Configuration Tool

The PC/Windows based DVR Notification & Tracking Configuration Tool (DNCT) is provided.



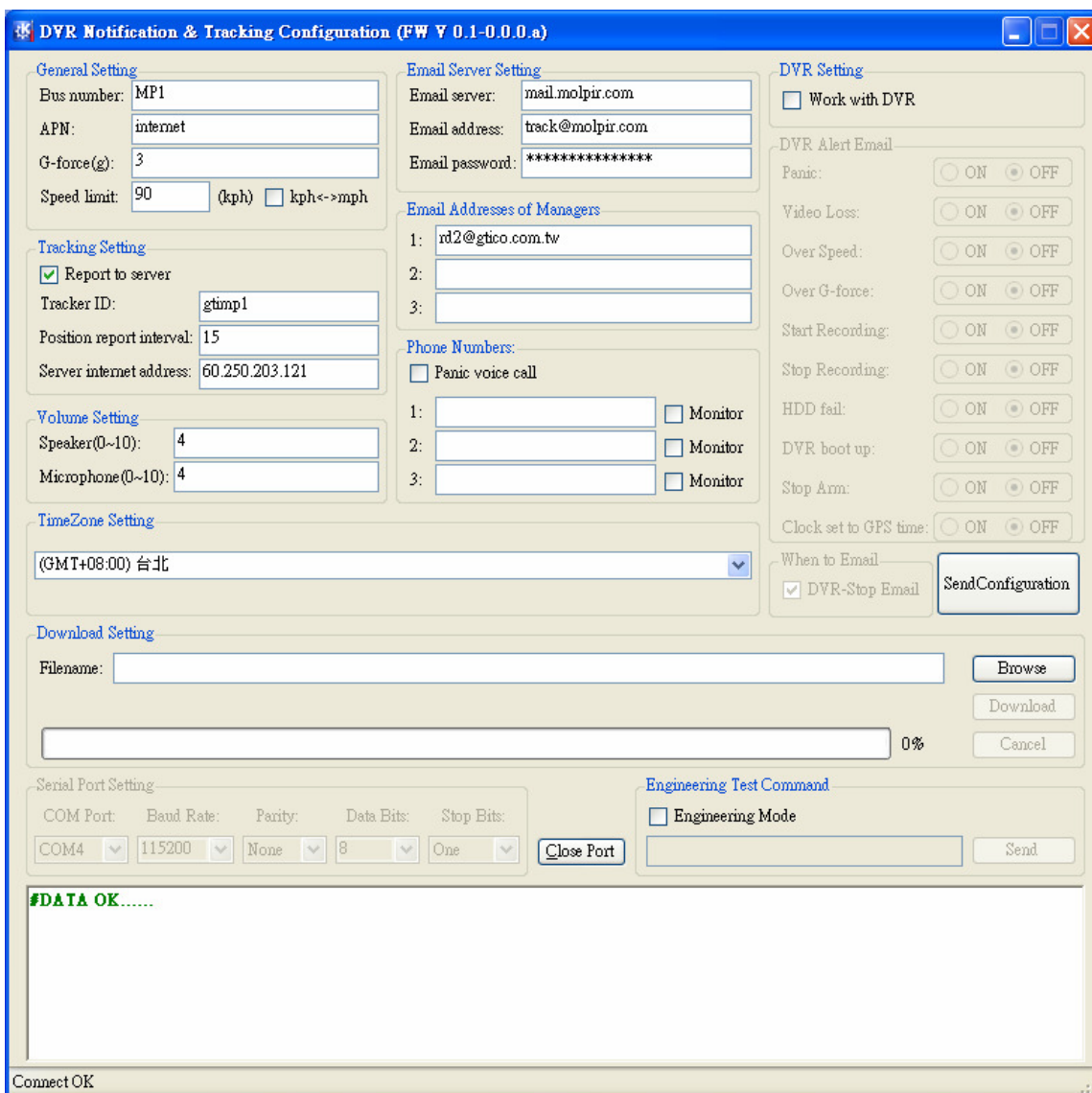
- Please decompress file [DVR Tracking Terminal.rar](#).
- Please run **setup** to install it before execution. It may take some minutes to download Microsoft's NET Framework during the installation if it is not installed in the PC.
- When executing DNTC tool, select the correct COM port and activate the button **Open Port**. The default parameters are 115200 baud and N,8,1. The COM port converted by USB data cable could be checked as below:

Windows Start → Setup → Control → System → Hardware → Device Manager → Connection Port (COM & LPT)



2.3.2 Setting the Configuration Tool

Following snapshot is a reference setting. Most settings could be used except items described following:



- APN
 - SIM card's access point name. Please set your own value. For example, it's "isp.cingular" for some AT&T wireless cellular system.
- Bus Number



- This setting is from Tracking Server as shown above.



- Report to server
 - Please check this item as shown in the snapshot. Otherwise, it won't talk to server.
- Tracker ID
 - The tracker ID for MP1 is gtemp1.
- Email Server/Email Address/Email Password
 - Please create an email account on email server.
 - Enter the email server (IP or logical name).
 - Enter the email address of the account and also its password.
- Email addresses of managers
 - These are email addresses of vehicle managers. One email address is ok.
- Work with DVR
 - If the tracker co-works with DVR, please select this option.
- Send Configuration
 - Once the parameters are set, just press the button SendConfiguration for confirmation.
- Close Port
 - Close port to terminate the connection to tracker

One can then power recycles the tracker for setting. Please note that to have GPS position, the test should be performed outdoors.

2.3.3 Connect to Tracking Server

- Run IE (Internet Explorer)
- Go to web page
 - <http://60.250.203.121/TrackingServerSkt/Login.aspx>
- Login with your password



GPS LIVE TRACKING PORTAL

Login:

Password:



VOYAGER