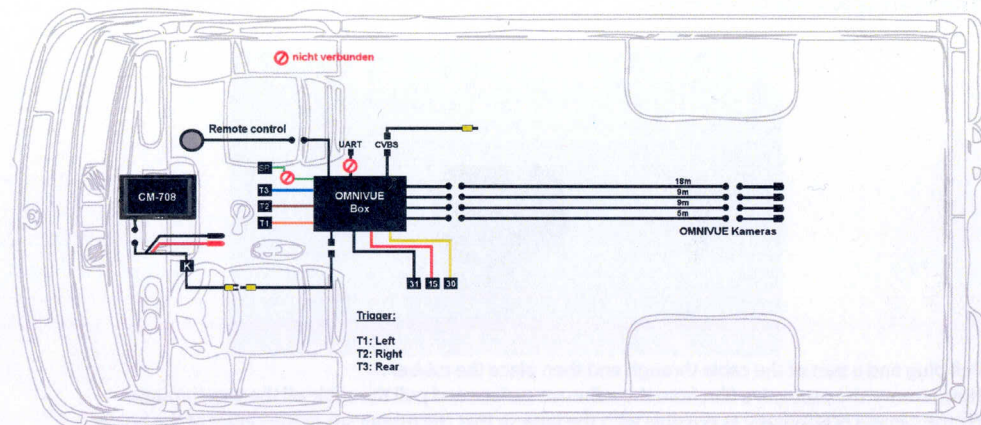


Connecting to vehicle:

- Route cables as shown below.
- Connect the connectors of the camera, the monitor and the wired remote control to the ECU-box .
- Connect the colored wires according to their markings:
 - black - 31 (ground)
 - yellow - 30 (battery-plus)
 - red - 15 (ignition-plus)
 - blue - RFL (rear drive light)
 - orange - L(49a) (indicator/turn signal left)
 - brown - R(49a) (indicator/turn signal right)

Green wire (Speedpulse) is optional and does not need to be connected.



ATTENTION:

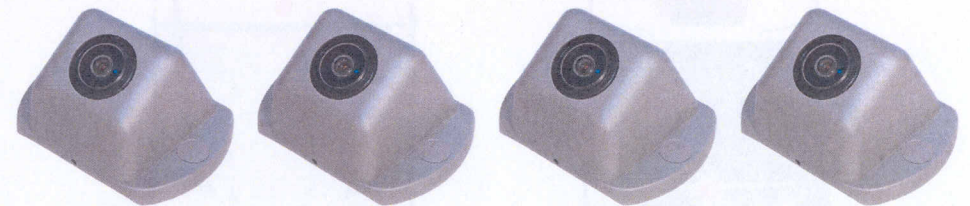
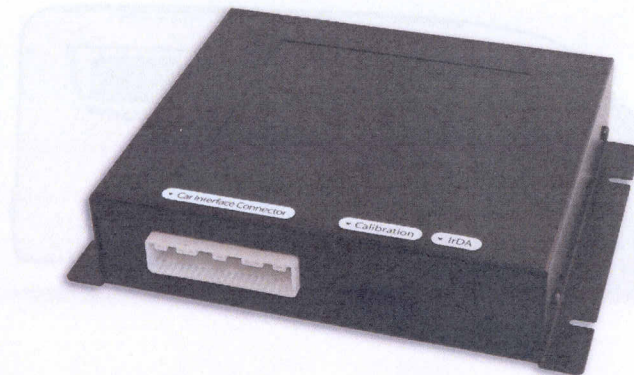
To avoid damage at the cameras please do NOT connect any of the four OMNIVUE cameras directly to your display e. g. the CM-708. Cameras receive a maximum of 5 Volt from the OMNIVUE box (ECU) and cannot handle 12 Volt from the display or direct connection.

Ignoring this will cause serious damage to the cameras.



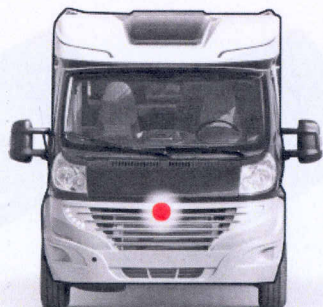
360° OMNIVUE

INSTALLATION GUIDE

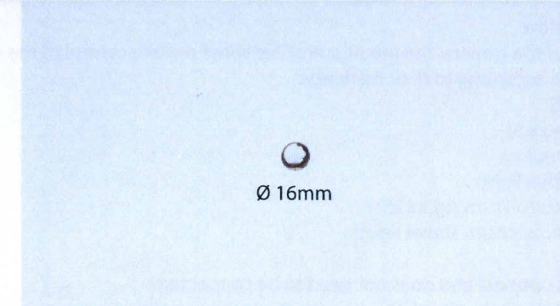


Choice of installation points:

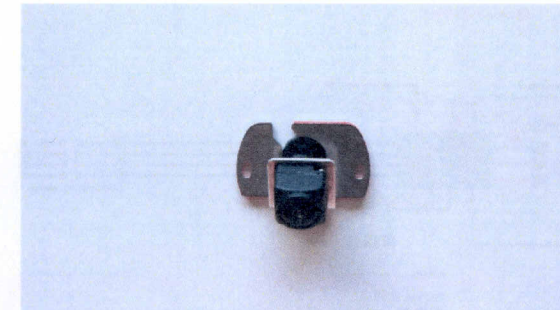
Select the mounting positions of the four cameras.
On each side one camera should be placed as high as possible and centered.
Here is an example (red dots show optimum mounting positions):



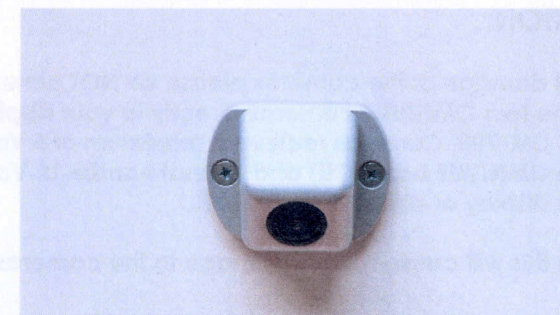
Installing the cameras:



- Drill a hole of 16 mm in diameter where later the center of the camera holder will be mounted.
- If necessary, protect the bore from rust.



- Pull plug and a part of the cable through and then place the rubber.
- Now remove the protective film from the adhesive surface and pull the cable all the way through.
- Fix the camera horizontally as possible with the tape so that the rubber sits in the center of the holder.



- Place camera on the cover and secure it with two countersunk screws.
Depending on the material you may have to drill through or predrill. Appropriate material screws must be selected. Seek advice from a professional if in doubt.
- Fill up the hole from behind with a sealant to prevent the intrusion of water.